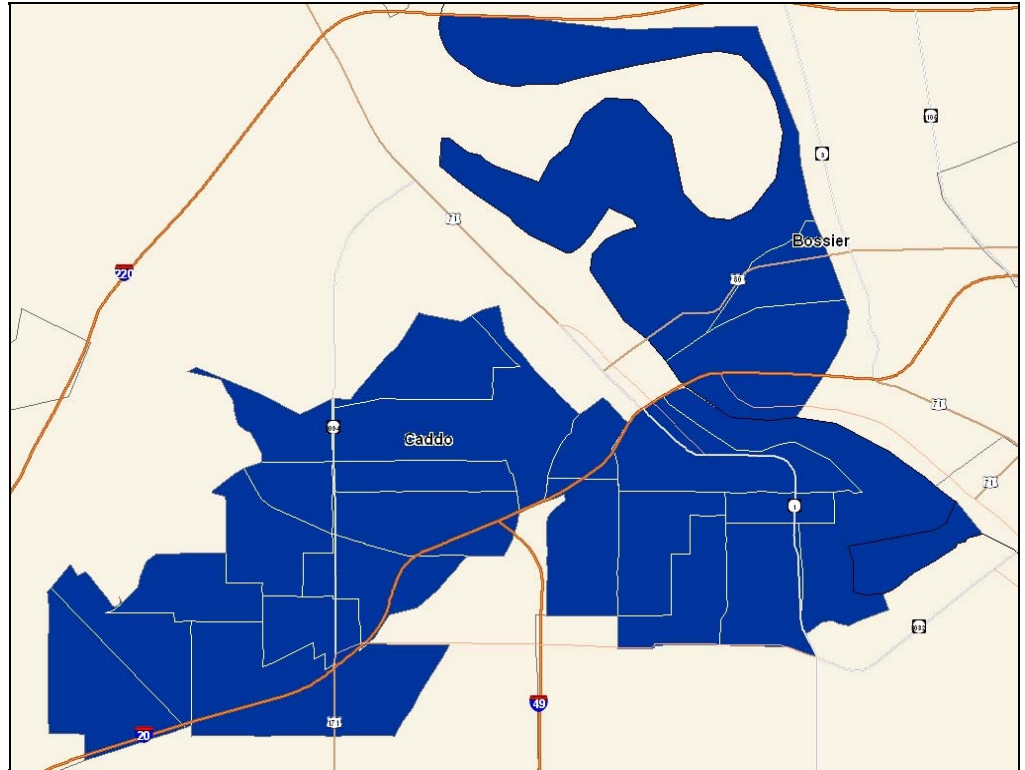




■	Roy A. Burrell		
		5,317	86.4%
■	Brian Hairston		
		834	13.6%



October 20, 2007 Votes Cast

TOTAL	6,942		
Republican	598	8.6%	
Democrat	5,567	80.2%	
Other Party	777	11.2%	
White	1,414	20.4%	
African-American	5,409	77.9%	
Other Race	119	1.7%	

November 17, 2007 Votes Cast

TOTAL	1,395		
Republican	251	18.0%	
Democrat	986	70.7%	
Other Party	158	11.3%	
White	640	45.9%	
African-American	733	52.5%	
Other Race	22	1.6%	

Registered Voters (11/01/2007)

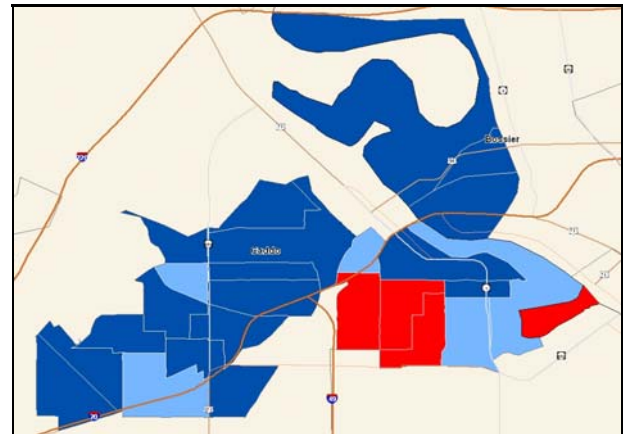
TOTAL	20,816		
Republican	1,900	9.1%	
Democrat	14,217	68.3%	
Other Party	4,699	22.6%	
White	4,413	21.2%	
African-American	15,641	75.1%	
Other Race	762	3.7%	
Age 18 - 34	6,501	31.2%	
Age 35 - 44	3,558	17.1%	
Age 45 - 54	3,969	19.1%	
Age 55 - 64	3,153	15.1%	
Age 65 +	3,634	17.5%	

Historic Election Results by District

Election Date	Winner	Office	Turnout	Turnout Ratio
October 2007	Foster Campbell	Governor	33.4%	71.7%
September 2006	Francis Heitmeier	Secretary of State	31.9%	129.5%
November 2004	John Kerry	President	55.4%	82.8%
November 2004	Chris John	U. S. Senator	50.0%	83.6%
November 2003	Kathleen Blanco	Governor	36.1%	71.0%
October 2003	Buddy Leach	Governor	35.1%	69.8%
December 2002	Mary Landrieu	U.S. Senator	38.6%	87.8%

Governor 2007 Election Results

B. Alexandrenko	26	0.4%
Walter J. Boasso	2,241	33.8%
Foster Campbell	2,522	38.0%
Sheldon Forest	12	0.2%
Anthony Gentile	8	0.1%
John Georges	764	11.5%
T. Lee Horne, III	11	0.2%
Bobby Jindal	1,001	15.1%
M. V. Mendoza	7	0.1%
Arthur D. Nichols	1	0.0%
Hardy Parkerson	10	0.2%
Mary V. Smith	27	0.4%



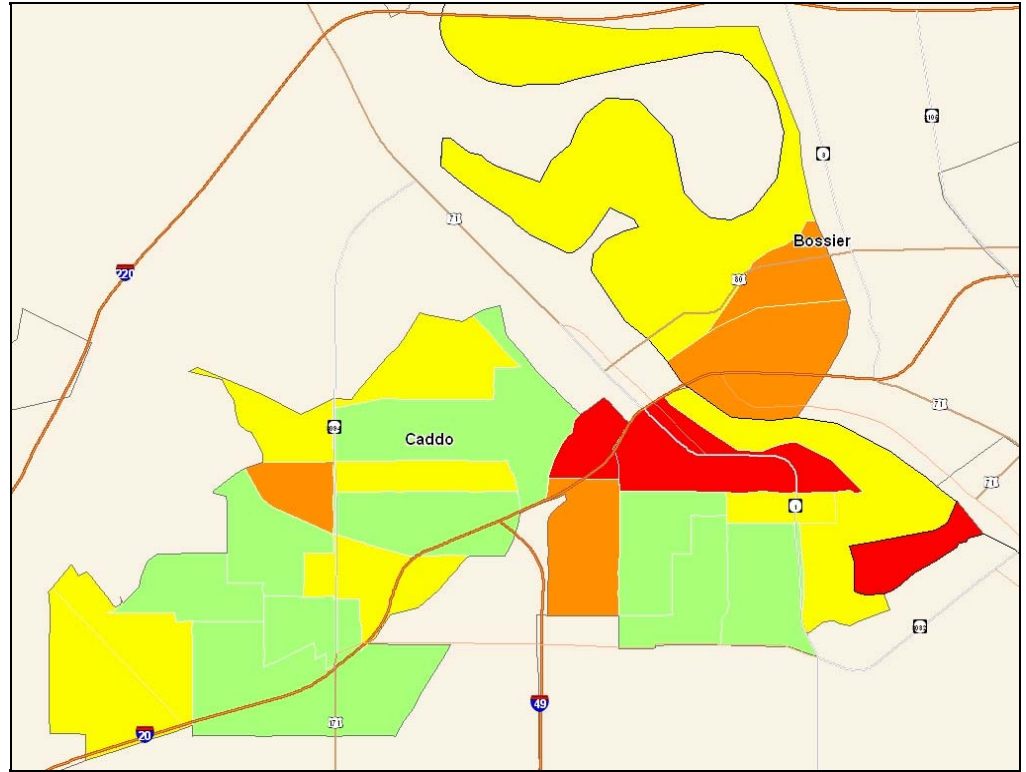
■ Jindal
 ■ Boasso
 ■ Georges
 ■ Campbell





Employed Civilian Population (Age 16+) by Industry *

Agric/Forestry/Fishing/Hunting	63
Mining	75
Construction	1,007
Manufacturing	1,061
Wholesale Trade	350
Retail Trade	1,520
Transportation/Warehousing	402
Utilities	83
Information	320
Finance/Insurance	208
Real Estate/Rental/Leasing	195
Prof/Scientific/Tech Services	351
Mgmt of Companies/Enterprises	0
Admin/Support/Waste Mgmt Svcs	843
Educational Services	1,134
Health Care/Social Assistance	2,344
Arts/Entertainment/Recreation	751
Accommodation/Food Services	1,809
Other Services (excl Publ Adm)	1,048
Public Administration	581



Registered Voters ■ 0 - 350 ■ 351 - 650 ■ 651 - 1,000 ■ 1,001 - 1,500 ■ 1,500+

Employed Civilian Population (Age 16+) by Occupation *

Management - Farmers/Farm Mgrs	744
Business/Financial	345
Computer and Mathematical	96
Architecture/Engineering	87
Life/Physical/Social Science	57
Community/Social Services	213
Legal	98
Education/Training/Library	819
Arts/Design/Entert/Sports/Media	170
Healthcare Practitioner/Technician	611
Healthcare Support	583
Protective Service	369
Food Preparation/Serving Related	1,585
Building/Grounds Cleaning/Maint	1,212
Personal Care/Service	702
Sales/Related	1,498
Office/Administrative Support	1,760
Farming/Fishing/Forestry	24
Construction/Extraction	1,012
Installation/Maintenance/Repair	438
Production	962
Transportation/Material Moving	759

Population Estimates *

	2007 Estimates		2012 Estimates	
Total Population	38,751		38,433	
Total Households	14,978		14,939	
Population - Race: White	8,511	22.0%	7,573	19.7%
Population - Race: African-American	29,537	76.2%	30,076	78.3%
Population - Race: American Indian	151	0.4%	156	0.4%
Population - Race: Asian	272	0.7%	326	0.8%
Population - Race: Pacific Islander	12	0.0%	12	0.0%
Population - Race: Other Race	268	0.7%	290	0.8%
Population - Age: 0 - 19	11,604	29.5%	11,221	28.8%
Population - Age: 20 - 34	8,397	21.4%	8,064	20.7%
Population - Age: 35 - 49	7,363	18.7%	6,876	17.6%
Population - Age: 50 - 64	6,656	16.9%	7,531	19.3%
Population - Age: 65+	5,270	13.4%	5,310	13.6%

Housing Estimates *

	2007 Estimates		2012 Estimates	
Total Housing Units	18,090		18,260	
Total Owner Occupied Housing Units	6,623	36.6%	6,520	35.7%
Total Renter Occupied Housing Units	8,355	46.2%	8,419	46.1%
Total Vacant Housing Units	3,112	17.2%	3,320	18.2%

*Source - ESRI Business Data

